



FreeTW

the Tele-Web-Viewer

User guide

The application “FreeTW”

Using a PC for the movies, pictures and mp3 may be hard and painful, the commands are always different, sometimes the double click is ok, other times it is not applicable, you have to identify and use the right applications, you have to close windows that are popping up, give answers to obscure questions...

If the cars would like the PCs, with the commands autochanging, perhaps with the accelerator becoming a cloche, like onto airplanes, when you have to go uphill and the brake pedal swapping place with that of the friction command when you are driving downhill, a lot of trips would stop at the very beginning and in a wrong fashion.

FreeTW simplifies the management of the PC and guides the main programs with few commands, easy to be remembered and, when it is possible, always the same.



FreeTW has been developed to be used in the living room,
with the remote control and a dedicated computer.

Installation

FreeTW doesn't need any installation, it is enough to launch the link FreeTW and then copy it onto the desktop, into the start bar or wherever you feel it comfortable.

At the startup FreeTW will check the system components and, eventually will propose to install something, from the "Extra" local folder or from Internet.

Whenever you'll have to install additional components please note that the local setup files (into the "Extra" folder) are the versions targeted to the italian market (some english and some italian versions) . If you would choose other languages versions you have to download them from Internet and pay a little attention to the language checkboxes/comboboxes before starting either the download or the installation.

If you experience installation problems, please consult the document
“Installation_and_troubleshooting.pdf” .

To uninstall FreeTW it is enough to erase the "FreeTW" folder.

The four main commands

UP and DOWN

- to select the previous/following element into a list
- to scroll the windows up and down
- to move the cursor position when editing a test
- to choose the previous/following picture (or song)
- etc..

OPEN

- to start the reproduction of a song / movie / web page or everything has been selected
- to "open" more something (for instance finding the links inside a web page)
- to open with WMP the movie inside a control element into a web page
- to open the Full Screen mode
- etc..

CLOSE

- to stop and close the movie / web page / song /images slideshow etc..
 - to return to the previous web page
 - to close the resources folder and go back to the upper folder
 - etc..
- (giving "close-close-close.... you escape from every status and go back to the start menu)



With **FreeTW**, using always the same application, and with only these four commands you will be able to enjoy a full evening onto your lounge to watch web televisions, but also your movies and your pictures or listen to the radio or your songs in MP3, tutorials and video-recipes, the news and the weather reports... all without stress, using the remote control, like using a classic TV.

FreeTW allows you to do all these things with a single hand, while you are enjoying an ice cream stick. You can read the little captions onto the screen far from it, without having to buy a 60 inches monitor costing 5000 euros.

The commands that you can send by voice or remote

With four commands you can do almost all, but after a while it becomes so easy that you will like to do more. Here the commands to do all the rest and always using the remote control only:

PLAY/PAUSE - To stop a movie or the images slideshow or the mp3 playing and go to take a beer, popcorns or an ice cream stick, up to you, and then restart from the same point.

ViewMode - Enlarges the FreeTW program to full screen and without borders, useful only for the websites that render videos full page with Flash (not so common)

FullScreen – Enlarges movies and pictures to full screen or bring those back into the window. The same effect is obtained with a double click of the mouse in the main window but sometimes it is comfortable to use a key (DVD playing for example)

ToggleLens - Open / close the magnifier lens useful to read the little captions
(a lot of websites seem not aware of the fact that the WebTV has to be watched far from the screen)

Zoom +/- - Enlarges / Reduces the dimension of the web pages.
(a lot of websites seem not aware of the fact that the WebTV has to be watched far from the screen)

Left / Right - Pan left and right the viewing of the web pages when they are enlarged.

MemChannel – Memorize the address of the web page that you are visiting and a thumbnail to be used as a reminder. If the address is already memorized only the thumbnail is updated. The address is saved into the current list immediately after the channel that we used to open the page. A name and some notes are saved too.

FindLinks – Extracts all the links from the web page that we are watching and proposes them into a list. In the first lines you can see the links to the video streams if present. The link of stream type usually starts with “mms://...” or ends with “.wmv”, sometimes their names are strange but FreeTW is able to recognize them and put them in pole positions. Use the command “OPEN” to open the selected link (with light blue background) or the command “CLOSE” to shut the list.

SendText – Writes chunks of text that have been previously saved using only two keys. Hit “SendText” and then a numeric key (useful for the “user name” and the “password”)

NUMBERS (from 0 to 9) – Channel selection with a numeric code (as composing a telephone number)
Also text writing using the 'T9' method.

BACK – to delete when you are writing text (does not erase files or other important objects...)

ENTER – closes the editing operations, copies some text into the clipboard, tries to open on web as a link or look for that string into Google.

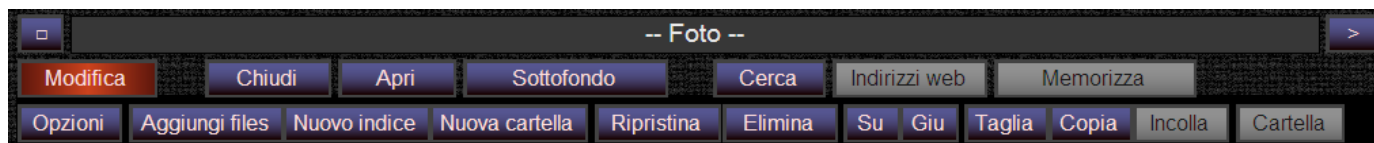
Mute	- Disables the sound for movies and mp3
VolumeUp	- Increases the master volume of the mixer
VolumeDown	- Decreases the master volume of the mixer

MouseBt_Left	- left mouse button
MouseBt_Hold	- hold the left mouse button (for dragging with a single hand)
MouseBt_Right	- right mouse button

Cursor N-E-S-W	- mouse cursor in the main four directions
Cursor NW-NE-SE-SW	- mouse cursor in diagonal directions

The command bar

These are the commands generally used when you have access to keyboard and mouse. Some of these commands are the same that you can invoke with the remote control, or via voice control, and are better explained in the previous page.



----- INTO THE UPPER ROW -----

- | | |
|----------------------|--|
| Little square | - Enlarges FreeTW to full screen. |
| Address bar | - Here the selected channel appears. |
| Right arrow | - Opens or finds the website or the stream written into the Address Bar. |

----- INTO THE SECOND ROW -----

- | | |
|--------------------|---|
| Edit | - Opens the third command row, than contains the commands to modify the channels and the options. These commands could lead to damages if used in a wrong way so it is possible to lock this command with a Password.
(you can find that into the "Options" panel and into the file "FreeTW/User_Files/UserOptions.txt" too) |
| Close | - Closes and goes back.
(repeatedly hitting this command you'll go back to the initial list) |
| Open | - Opens the selected channel. |
| Background | - Starts the execution of the background music, see "Background music" |
| Home | - Opens the search provider defined into the options. |
| Web links | - Finds the links into the web page currently opened. |
| Mem channel | - Memorizes the currently opened channel. (if already existing, only its snapshot is updated) This command command also stores a image in "Channels_Snapshots" |

----- INTO THE THIRD ROW -----

- | | |
|-------------------|--|
| Options | - Opens the panel to modify options and remote controls. |
| Add files | - Adds to the actual list one or more local files or network ones. |
| New index | - Adds an index (channels index) inside the actual index |
| New folder | - Adds a folder (Windows folder) into the actual index |
| Undo | - Allows to restore all the channels, indexes and links and return to a previous status. (to be used if you experience errors) |
| Delete | - Deletes the selected channel. (does not erase files, only their references) |
| Up | - Moves the selected channel one position up. |
| Dw | - Moves the selected channel one position down. |
| Cut | - Cuts away the selected channel and inserts it into the clipboard. |
| Copy | - Copies the selected channel into the clipboard. |
| Paste | - Inserts into the actual position the "cut" and "copied" channels. |
| Folder | - Opens the Windows folder containing the selected file. |

How to modify the channels

FreeTW is provided with a lot of predefined channels, an hundredth of WebRadios and WebTVs all in italian language and, differently from concurrent applications, these channels are all working well.

However it is possible that in the future some of these channels will stop to transmit or that new ones will appear, so FreeTW allows to delete, modify and add the channels and indexes containing them.

Using FreeTW you can extract the addresses of new channels from the web pages with very powerful and comfortable methods and it is very easy to add these new channels with their snapshot.

The channels are organized with the “indexes” and with the “folders”

The indexes

With yellow text

The indexes can contain everything, other indexes or folders, pictures etc...

The elements inside an index (channels) could be ordered as you want and you can even change the annotations of each of them.

The only problem with indexes is that they are not autoupdating: if you add new files, these newly added files could not be used since the insertion of the new files is not automatic.

This way the indexes are suited to gather the channels rarely changed, like the indexes and folders.

The files like the songs (MP3), movie local files (AVI or DivX) and the pictures, are better managed with the “folders” that are easier to be managed and autoupdating.



The folders

With light blue text

The texts into the folders are in light blue to distinguish them from the indexes that have yellow captions.

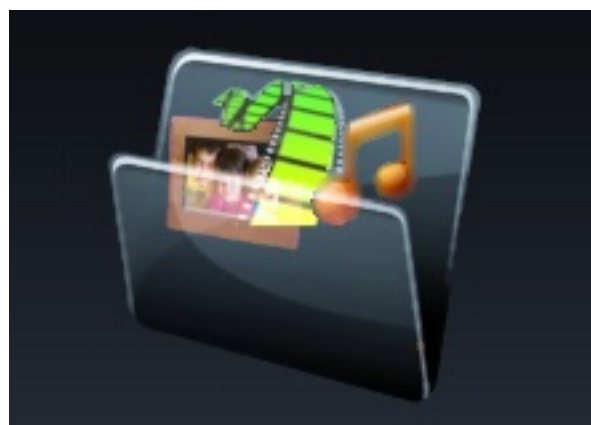
The folders exactly correspond to the Windows folders, visualized in a list fashion.

What's inside a FreeTW folder is the contents of the corresponding folder of the file system, with subfolders.

This way, the access to new files, for instance into the folder of the incoming downloads of eMule, is an automatic operation but, conversely, we are not able to edit the channel names, their order or delete them.

To change the names to the channels or to erase them, you have to modify or delete the corresponding files, directly inside the Windows folders.

Using a folder you can point to an entire hard-disk, or to the CD/DVD, to a local network path or to an external hard-disk, a digital camera, etc...



The folders have different icons depending on their content



An empty folder.



A folder containing other folders.



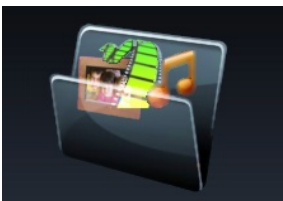
A folder containing songs.



A folder containing movies.



A folder containing pictures.

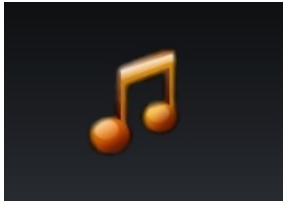


A folder with mixed content.

The media, at last !

Inside the indexes and the folders, open and open, at last you can reach the “media”, the actual correspondent of the classic TV channels, to watch and to listen.

Media types



music



movies



pictures



web

The “web” kind of media can be movies, television or radio channels or can contain other channels too...



... a teletext channel

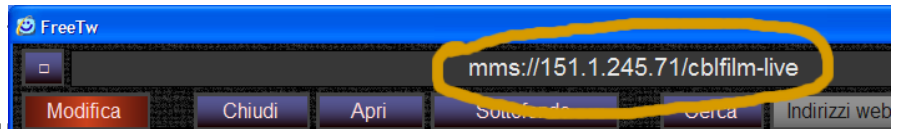
... a WEB-Radio



Adding new channels

All FreeTW channels are identified by their "URL", that are a sort of address. "URL" = Uniform Resource Locator = standardized resource identifier

The "URL" addresses are written into channel in Internet.



To add channels to FreeTW you can use different methods depending from the fact that you already know their URL or not and depending on the kind of channel (WebTV, aerial TV, local file on hard disk etc..)

Add local files (songs MP3, pictures, movies downloaded with eMule etc..)

The "New folder" command has to be used. It opens a window to the files into a folder of the HardDisk, in other memory devices or into the local network. You can even use the "Add files" command but pay attention that the full path of every file is added and it does not work smoothly if you move some files or add new files to a folder.

Adding channels of WebTV and WebRadio

After found some WebRadios and WebTVs with Google and every time you are successful in having one of them tuned, you'll add its address with the key "Mem channel" (or using the 'memorize' key of the remote control)

That way you memorize the addresses of the web pages but it is better to attempt to open more the "streams" (audio/video flows) with Windows Media Player, using the "Open" command that usually is able to automatically extract the flow address. If after opening Windows Media Player you can watch at the channel, then hitting "Mem channel" is enough to memorize the address of the 'stream flow'.

If the "Open" command does not work it should be because the web page does not contain "stream" addresses or there is a large amount of them and then FreeTW could not choose one of them. In this case please use the "Web links" command that opens an address list to be chosen manually with "double click" or "Open". The best links, directly opened by WMP, are those starting with "MMS" or ending with "ASX" or with "WMV".

If you can't locate the 'stream' address there is the possibility to use the right button of the mouse being onto the page control that is playing or that is reproducing the movie and then choose the "Property" menu, you could read the address (URL) and using the mouse right button, you can copy the address and then paste it on the FreeTW address bar (up in the FreeTW window) and finally you hit the "little right arrow" button to the right of the address bar. If you can see Windows Media Player starting and playing the desired channel, then hitting "Mem channel" all is done.

Some "stream" addresses are not stable during time (for example those of the TG1 news of the italian national RAI Tv that are changing every day) . In these cases it is better to memorize the web page.

Adding television, radio and cam channels (via aerial, satellite and cable)

Even for these channels we use the "URL" of them, for instance:

"TV-DigitalTerr_ch39-sid0-pid..." (Terrestrial digital television on the 39th channel)

"TV-AnalogAnt_ch55" (Analogic television / channel 55)

"TV-AnalogAnt_Search-30-60" (look for all the analogic TV channels via aerial between the channels 30 and 60). Found channels will be added inside the FreeTW index immediately after the currently selected channel.

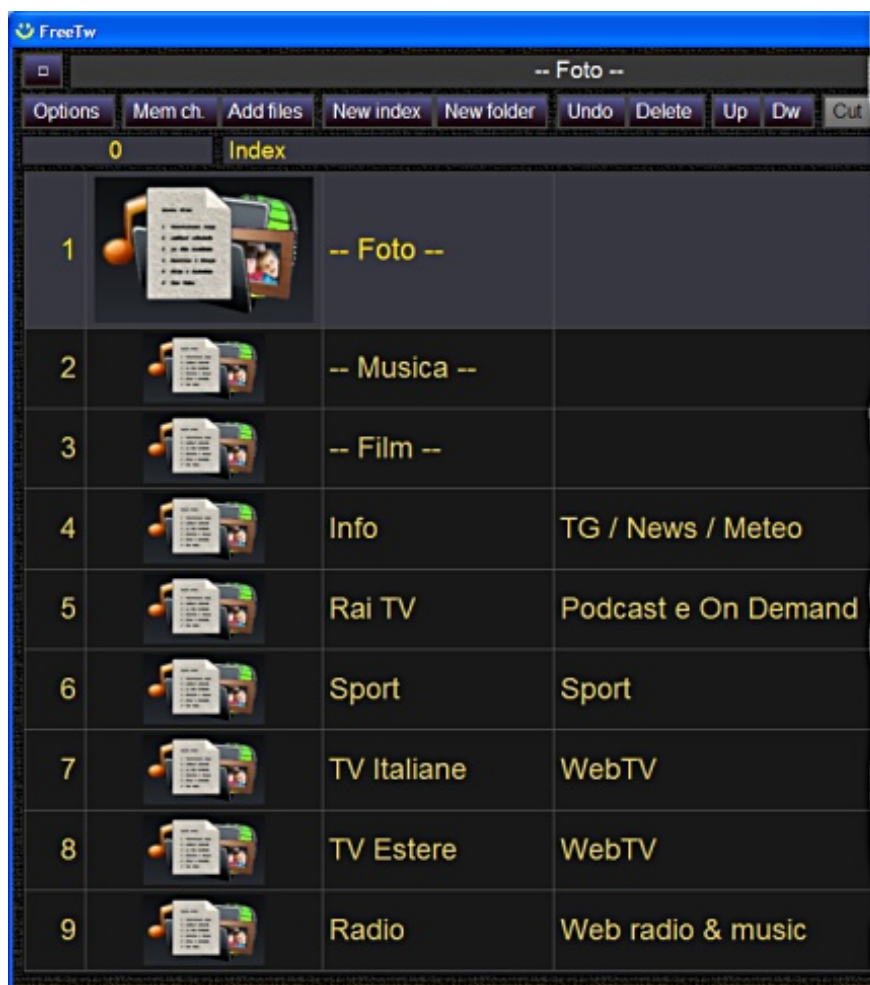
"TV-Camera_ch3" (Cam number 3)

about the other types: (Radio, Satellite, S-Video, RGB etc..) please read the file "Analog_and Digital_TV.pdf"

hints: the channels are always added immediately after the actually selected channel, so before starting adding new channels it could be a good practice to surf the FreeTW indexes end positioning where you like to add the new channels. Another good method is to use always the same place when adding channels and then, perhaps after having tested them for a while,, cut them and copy them into the final positions.

Reorganize the channel indexes

When you'll start FreeTW for the very first time, it will show more or less in this way :

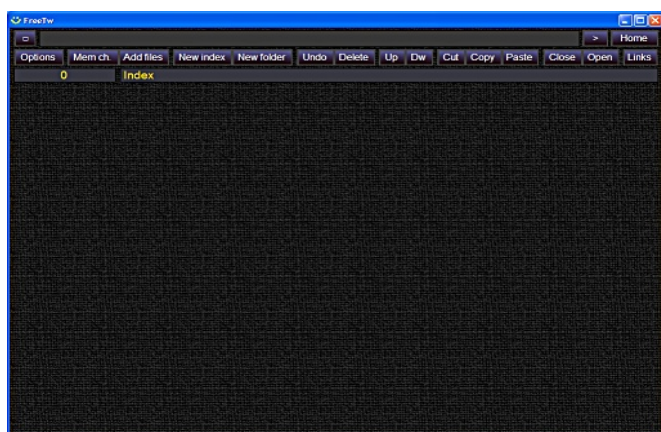


I used the first three lines for "Foto", "Musica" e local "Film" and I added some dashes into their names just to underline that they are special indexes.

These three indices do not contain web addresses, instead they contain only local resources like MP3, movies and pictures into the hard disk.

From here on instead all the contained resources are web ones.

Here you can find WebTVs, WebRadios and the sites with videos like f.i. YouTube.



If FreeTW instead opens without any channel, it could be that the folder "C:\Documents and Settings\User-name\Documents\FreeTW" is missing.

Using the "Up" and "Dw" commands and with Copy / Cut / Paste / Delete it is possible to reorganize the channels.

It should be possible to eliminate all this stuff, as you can see here aside, and start from scratch, for example with the French channels.

To populate the list from scratch you should use the "New index" command and add a tenth of main indexes. After that, using the mouse right button you could rename your indexes with "-- Pictures--" etc... Moreover you should open every index and insert inside each of them other indexes, folders and channels.

My personal way to organize the channels could not be the best one; my hint is only to retain the most used indexes in the first positions, just to reach them easily.

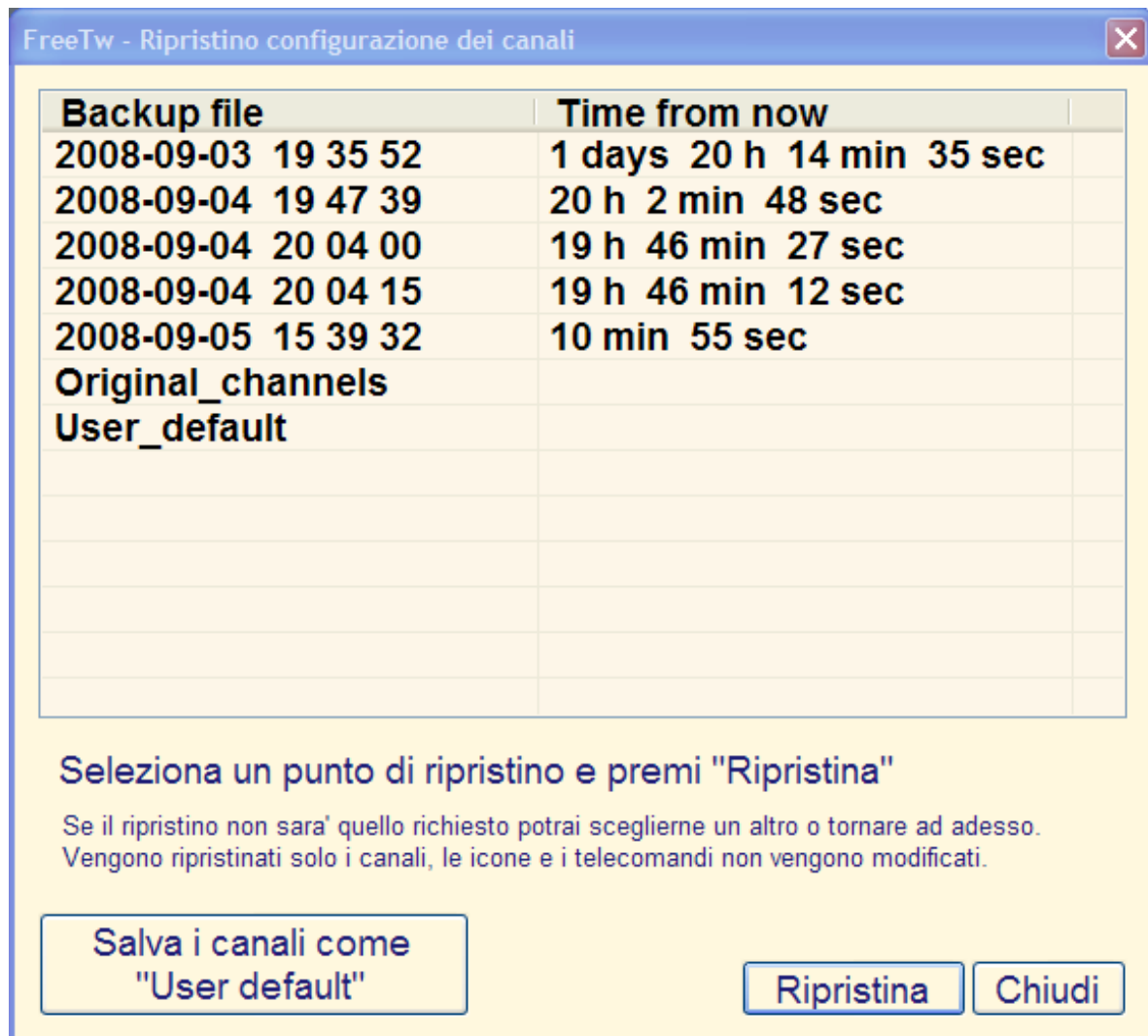
It is possible to experiment with the channels editing without worrying about cancellations because if you do some mistakes there is the "Undo" command with which you can restore a previous status or even the very initial status.

The “Restore channel's configuration” window

The FreeTW commands are immediately executed, without boring questions, so it is possible to inadvertently erase something important.

Having done mistakes, it is enough to open "Edit" / "Undo" and this panel will show up listing a lot of restore points.

You have to choose a restore point enough old to correct the mistake and then you'll hit the "Restore" button. After that it is a good practice to check the channels list to be sure having chosen a good point back in the time machine. If it is not the case, open again the “Undo”panel and please try with another restore point.



This panel restores the channels only and doesn't save the modifies related to remote controls, to the options and to the snapshot images.

The restore point "User_Defaults" contains the channels saved in the past using the button "Save present channels as user default". When you reach a stable channel situation, that you want to remember, it is a good practice to save it using this button.

The restore points "Original_channels" and "User_Defaults" are never erased while those tagged with a date are throwed away after some days if there are a lot of restore points saved.

The options

To invoke the “Options” panel please hit that button into the main window.



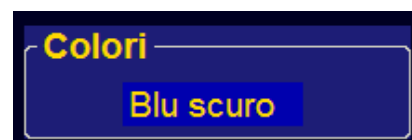
The “Language” panel

Mouse clicking onto the language name you can choose another



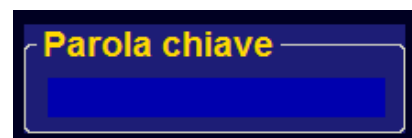
The “Colours” panel

Hit onto the caption and choose the preferred colour scheme.



The “Password” panel

Here you can write the password used to lock the "Edit" button to block the execution of all the dangerous commands.



If you forget this password you could not change it here but it is enough to delete it into the file "FreeTW/User_Files/UserOptions.txt".

Hints:

- empty this password to allow using the “Edit” panel without any locking again
- use a long or short word (since six characters long) to change the security level
- use only cyphers to allow opening the “Edit” panel using the remote control too

The “Home address” panel

Write here the address of your preferred search engine provider, usually it is “www.google.it” or “www.google.com”



The “Extra install” panel

Use this command to open the "Extra" folder of FreeTW.

This folder is a useful repository to gather all the additional files related to the audio-video codecs, to the voice recognition and to system components.



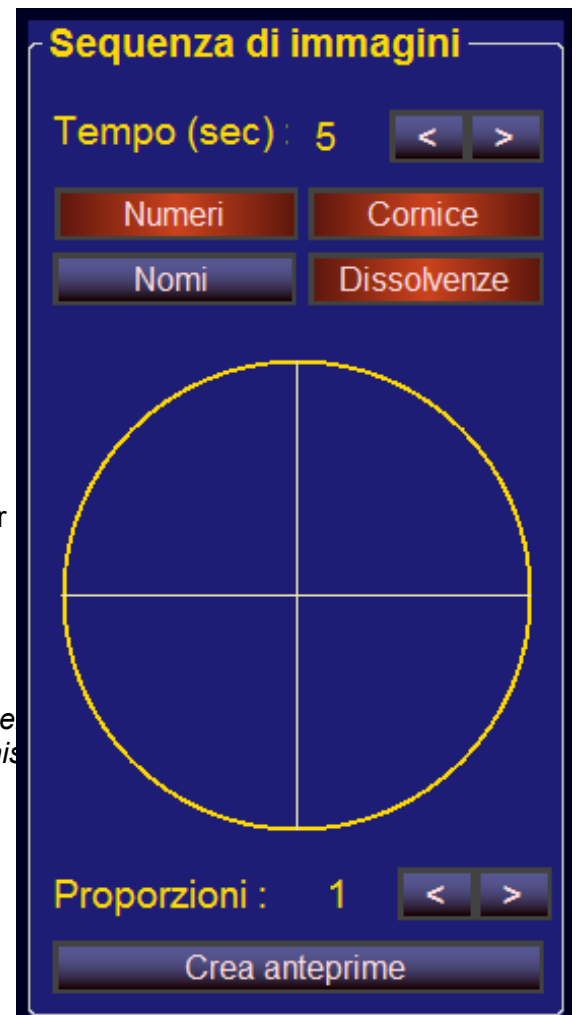
If this folder is empty you can reach the "www.freetw.net" website and download the installation files needed or you can find these files in different languages and more updated looking for them in Internet.

We invite you to go onto the "www.freetw.net" website to read the file "[Installation_and_troubleshooting.pdf](#)"

The “Image show” panel

- “Time (sec)” - time for the repetition of images
- “Numbers” - shows the numbers of the images
- “Image names” - shows the names of the images
- “Frames” - shows the images with frames
- “Transitions” - activates the transitions between images
- “Pixel aspect” - deforming of the proportions
- “Create image icons” - inside the image folders the thumbnails are shown (using this option when opening a folder for the first time some time is needed to create the thumbnails)

“Pixel aspect” has to be set to obtain a round circle and not an ellipse but when you change monitor it is a good thing to check again this



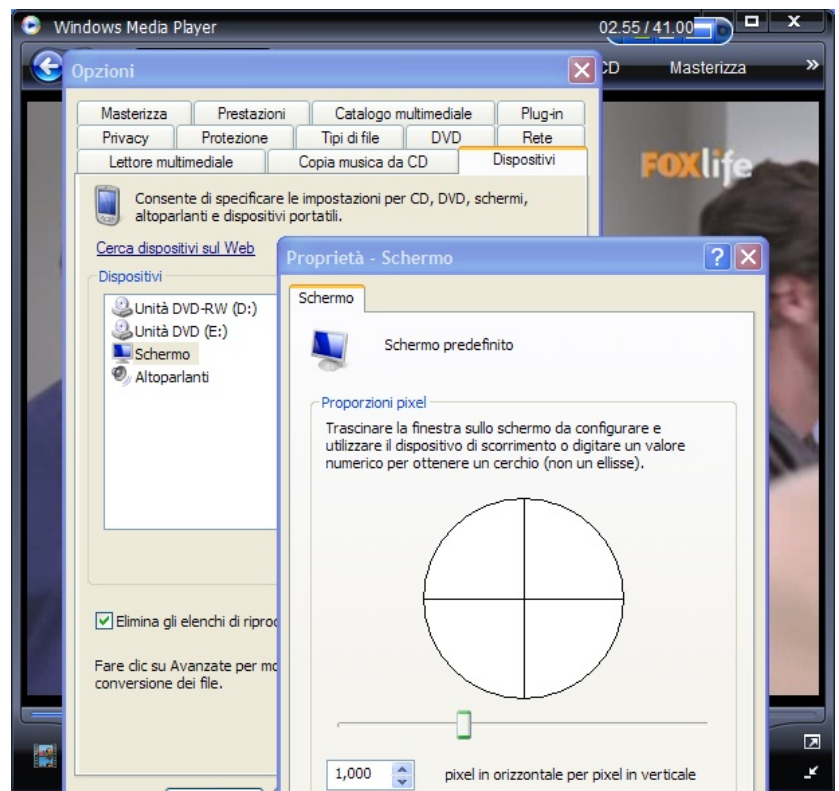
The setup of “Pixel aspect” applies only to the images. Instead, for the movies, you have to setup Windows Media Player, as you can see here.

Open “Windows Media Player” with a movie or a video (do not use a song)

Go on the upper or lower border of WMV, open the “Tools” menu using the mouse right button and select:

- Options
 - Devices
 - Screen
 - Properties

Change the value to obtain a round circle or write down the same value that you have chosen in FreeTW.



The “Options” panel

“Resize rows”

Enables the automatic enlargement of the selected row (using very slow crossing of the traversing of the lists)

“Open/Close sounds”

Enables the sounds when the channels are opened or closed.

“Up/Down sounds”

Enables the sounds during the traversing of the lists (in Vista it is better to disable a lot this operation)

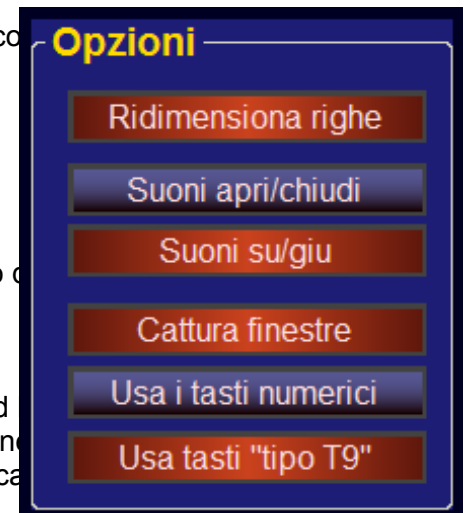
“Remove popups”

Inhibits the automatic openings of windows and auxiliary players that could be closed using the remote control too (if you are browsing the web with Internet Explorer time you are using FreeTW it is advisable to disable “Remove popups” because of problems)

“Use keys “0” to “9” ”

Enables the selection of the channels using a numeric code similar to a telephone number. If you are not using this characteristic it is better to disable it because it could conflict when using other applications.

"Use T9-like input" Enables the writing in a "T9" fashion like in the mobile phones. Please read more about this in the page named "Writing text using a remote control" close to the end of this document.



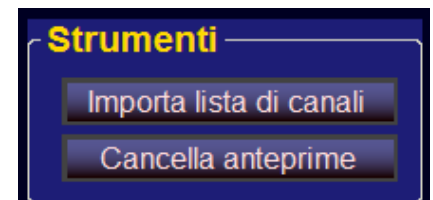
The “Tools” panel

“Import channel list”

It is useful to control the channel list of another FreeTW installation. (usually onto another computer in a local network) to discover if there are channels not yet inserted in the local FreeTW. Eventual URLs not locally present will be added (merged) all after the selected channel in the actual list. (this is an advanced command and you can ignore it but sometimes you could spare a long manual activity to align two FreeTWs with the same channels)

To import a channel list you have to select the file "ChannelList.txt" inside the folder "Reports" of another FreeTW (probably onto another computer on the local network)

Alternatively it is possible to copy the file "ChannelList.txt", maybe using a memory stick from one computer to another and then to use this command (in this way however only the channels will be imported, without their thumbnail images)



“Delete unused icons”

It is useful to erase the thumbnails (icons) no more used. The spared room is little but this cleanup could speedup some operations slightly. If the option “Create image icons” is disabled then this command erases all the thumbnails of the pictures too (those used but even those unused).

(this command only deletes the thumbnails into the folder “Documenti /FreeTW / Icons”, FreeTW never erases neither modifies the pictures or other files of the user)

The “Voice input” panel

“Use voice input”

Enables the voice commands
(if you are not able to enable it, perhaps “Microsoft Speech SDK”
is not yet installed)

“Use voice output”

Enables the voice answers by the computer

“Audio level”

Shows the level of the microphone signal

“Minimum level”

It is the minimum value needed to recognize voice commands.

“Voice control panel”

Opens the “Properties” panel of the voice control inside the Window

“**Recog. props**” Opens the Properties of the voice control

“**Mic. training**” Opens the microphone panel

“**User training**” Opens the 'training' panel



The microphone must have enough sensitivity to produce an “Audio level” signal of about a quarter to half scale talking at normal volume and the noise level, when there is silence, should be minimum or null.

If the audio level of the movies generates fake commands, please increase “Minimum level” with the right arrow. If you elevate too much this value, then you'll have to speak loudly to be recognized.

If it is not possible to identify a compromise value then you'll have to take the microphone very close to you, or to speak with more strength or to limit the volume in the movie reproduction.

To successfully use the voice commands you have to master a lot of technical aspects. *It is better to read the file: “Voice Recognition” if you are interested in this feature.*

How to use the voice commands

The words to be used

You need to learn pronouncing and to remember some english terms.

START LISTENING	(listen)
STOP LISTENING	(stop to listen)
FULL SCREEN	(enables / disables the "full screen")
PLAY PAUSE	(pause / restart)
MOUSE GRID	(the grid to be used instead of the mouse on web pages)
OPEN LINKS	(open the window of link search into the web pages)
LEFT CLICK	(mouse left button click)
DOUBLE CLICK	(mouse left button double click)
PAGE UP	(goes up a page into a list or a web page)
PAGE DOWN	(goes down a page into a list or a web page)
ZOOM IN	(enlarges the dimensions of the web pages)
ZOOM OUT	(reduces the dimensions of the web pages)
SET VOLUME	(enables the voice commands "up", "down" and "close")
OPEN	(open)
CLOSE	(close)
UP	(up)
DOWN	(down)
LEFT	(to the left)
RIGHT	(to the right)
ONE / TWO / THREE / FOUR	
FIVE / SIX / SEVEN / EIGHT / NINE	(the cyphers from one to nine)

Please note that **only these words will be recognized** and that **not always they are all valid**, for example while you are watching a movie the words "UP" e "DOWN", useful for the lists, are disabled.

If you want to know which words are active, it is enough to pronounce something without sense like for instance "START LISTENING" and, if you talk with enough strength, a list of the valid commands should appear, on top, yellow ink on blue background.

Having the computer answering your commands could be useful to apprehend a pronounce very similar to its one and easing in this way the recognition.

The “Edit keys” panel

Hitting the buttons "Edit", "Options" and then "Edit keys" you have access to the remote control panel.

FreeTW - Editor dei telecomandi

Tasto premuto

	Keycode	Scancode	Flags
1	26	48	1

Mostra anche il rilascio

Codice
UP

Flags
EXT

Codice disabilitazione
s48f1

Codice comando
|s48f1|

Telecomando in uso
Gray 36_keys

Codici disabilitati

Aggiungi Elimina

kAAf11
kA8f11
kB4f11
kB3f11
kB1f11
kB2f11
kB0f11
s5Bf1
s49f1
s51f1
kADf11
s48f1
s50f1

Codici dei comandi usati

Assegna alla riga selezionata Elimina

Up	s49f1 s48f1
Down	s51f1 s50f1
Open	s5Bf1s12f0 s52f0
Close	kB2f11 s53f0
PlayPause	kB3f11 s39f0
Left	kB1f11 s4Bf1
Right	kB0f11 s4Df1
Zoom+	kA7f11 s4Ef0
Zoom-	kA6f11 s4Af0
ViewMode	kABf11
FullScreen	s38f20s3Ef20
ToggleLens	kAAf11
MemChannel	kA8f11

Cambia telecomando

Salva telecomando modificato

OK

The button “Load remote configuration” is useful to select a remote control other than the actual one.

The remote control "NO REMOTE"

If you are using FreeTW without any remote control, maybe in your office, with the keyboard and while other applications are in use it is important to choose the "NO REMOTE" remote control to avoid that some keys are disabled.

If you are using the remote control "NO REMOTE" (exactly with this name) automatically are disabled the options "Remove popups", "Use keys "0" to "9" " e "Use T9-like input" so you are sure that the other applications aren't disturbed by FreeTW in any way.

Usually with "NO REMOTE" the arrow keys of the keyboard behave as "UP DOWN LEFT RIGHT", the keys PageUp / PageDown control the volume, the space bar means PLAY-PAUSE, the keys INS and DEL means OPEN and CLOSE, the keys Plus and Minus manage the ZOOM and numeric keys are cyphers.

If you want to change this setup you can do it and save again the "NO REMOTE".

Modify the remote control or create a new one

In the upper part of the panel "Key pressed" / "Key code" and "Flags" show the codes arriving from the remote control on one or more rows. We can select one of these rows with the mouse and read into the "Key code" and "Flags" panels the meaning of the code.

Exploring the codes emitted by the remote control we can identify the most suitable keys to be associated to the commands of FreeTW. Some keys do not transmit any code and are internally used by the driver of the remote control and, unfortunately, there isn't any way to use or to intercept those keys if you can't ask the provider of the remote control to modify its internal firmware.

Starting from "KeyCode", "ScanCode" and "Flags" two more codes are constructed; they are named "Disable code" and "Command code" that are visualized into the panels with the same name. These codes usually contain "Scancode" and "Flags" but if the scancode is zero then the keycode is used instead to characterize in better way the codes and to distinguish, whenever possible, the generator of them.

The code "Disable code" univoquely identifies a part of the command, for instance "CTRL".

The code "Command code" univoquely identifies a command, for example "CTRL" + "ALT" + "DEL"

How to disable the undesired commands

All the remote controls that we tested have got keys that execute potentially dangerous operations. Some of the keys open the eMail application or the "My computer" panel, some other close every started application or invoke the start-menu. Hitting the wrong key when you are using a remote control in the dark is very easy and closing FreeTW by mistake or launching the eMail application while you are watching a movie is very boring.

Adding codes to the "Disabled codes" list can avoid you these undesired effects.

To disable a key:

- hit shortly the key of the remote control that leads to the undesired behaviour.
- into the panel "Key pressed" from one to three rows are shown
- select one of the rows and press "Add" into the panel "Disabled codes"
- if the code is not yet present into the list then it is added in the last position.

Selecting, with the mouse, the rows of the panel "Key pressed", it is possible to control into the panel "Keycode" what is the correspondence of this code and, into the list "Disabled codes", if it is disabled or not.

It is not a good idea to disable the codes "CTRL", "SHIFT", the letters from "A" to "Z" and the cyphers from "0" to "9" because after that we could no more use them, for instance into a web page, to write or to copy and paste.

To disable an undesired command usually it's enough to disable one only of its codes. You have to carefully choose which of them to disable and then test the effects of this setup.

To do some tests you have to close the window "Edit keys" otherwise the keys of the remote control and those of the keyboard are blocked and don't execute the FreeTW commands.

To enable the commands

To select the functions of FreeTW you could use all the keys of your remote control that generate codes and even the keys we disabled.

It is even possible to use the keyboard and you can associate more than one key to the same function (for example to use both the remote control and the keyboard without changing setup)

To enable a function:

- shortly hit the button of the remote control that invokes the function to be inhibited.
- if inside the list "Used command codes" an entire row is highlighted then the key is already used and we'll have to remove it from where it was before if we would to use it.
- select the row of the function we want to associate with it
- hit the button "Assign to selected command"
- the code will be added to the right of the command name

To save the modifications applied

The program FreeTW does not automatically save the modifications related to the remote controls; if we made some mistakes or we aren't sure about the changes we've operated, it is enough to load again the remote control or to close and restart FreeTW to discard all modifications.

If after doing changes that you want to immediately save, it is a good practice to hit the "Save remote configuration" immediately and then to save the current remote control or eventually change its name and create a new one.

Which buttons it's good to use

We haven't to fulfill the list "Used command codes" in any case ! It is preferable to have a remote control with less commands with a good layout than having a crowded remote that becomes unusable !

If the remote control can move the mouse natively and manages the audio volume natively, then the related functions from "Mute" and following codes should be maintained empty.

If you want to use a remote button for doing things different from its native behaviour, for instance the "Mute" button, first of all you have to add it inside the list of the disabled commands. After that the "Mute" key will be inactive and we can stop here or use it to be associated to a different function (if you like it) adding it to the list "Used command codes".

Adding the image of a new remote control

If you are configuring a new remote control it is nice to add its image with the same name of the remote, with extension JPG, BMP, PNG etc., inside the folder " Documents / FreeTW / Remotes ".

To obtain an aesthetical effect it is advisable that the remote control images are about 300 pixels high and with a little border around the remote case.

The background colour should be black so FreeTW can display it smoothly because it manages the black color as transparent.

How to write some text using your remote control

To insert some text, the T9-like mode as in mobile phones is used but the automatic completion of the text isn't active because when you are composing something like "www.webtv.net" it would be boring. To use these commands you have to enable the option "Use T9-like input" in the "Options" panel.

To start editing you have to put the cursor onto the textbox on the top and to hit the mouse left button. Now you should see a blinking cursor.

The numeric keys (from 0 to 9) are used to create more than one character as in the following table:

Key 1	.	,	/	!	?	-	1
Key 2	a	b	c				2
Key 3	d	e	f				3
Key 4	g	h	i				4
Key 5	j	k	l				5
Key 6	m	n	o				6
Key 7	p	q	r	s			7
Key 8	t	u	v				8
Key 9	w	x	y	z			9
Key 0			Space				0



When you hit a key, the background of the textbox becomes blue and, hitting more times the same button, you can choose a character.

When you've selected the desired character you'll have to wait for two seconds and the background of the textbox will revert back to a dark color. Now you can start to write the next letter.

If the following desired letter is associated to a different key, you haven't to wait for the two seconds.

The button "Clear" (under the "nine") erases the character to the left of the cursor or the selected text.

The button "Execute" (under the "seven") copies the text into the clipboard and opens a website or file, or starts searching the text using the search engine provider that you choosed before (see the "Options" panel)

It is even possible to use the cursor and using the mouse buttons you can copy and paste the text into different textboxes for instance when in a web page a password is required.

To modify the names and the annotations inside the channel list you have to hit the mouse right button being onto the desireb textbox and then you can write using the remote control.

You also can send some predefined text without writing it letter by letter. This is useful with some web sites, like "Cine1" that asks for a name and a password to visualize movies.

You can prepare some texts to be sent (from one to nine different strings) inside the file "UserText.txt". You could use special characters too like f.i. The {TAB} to pass from one textbox to the following one and then {ENTER} to send.

When you have to send some text, you'll put the cursor onto the textbox to be compiled, you'll select it with the mouse left button and then you'll hit the "Start" button of the remote control and a numeric key from "1" to "9".

Watching at DVDs

WindowsMediaPlayer 11 is able to play the DVDs with their internal menu and so Microsoft at last superseded the various DVD players that brought a lot of headaches with the Protection Area, the World Zones, the DRMs, etc...

Maybe that in some PCs the needed codec (MPEG2) would be unavailable but it is straightforward to install it using the codec packs you can find into the "extra" folder or searching in Internet the "KAZAA CODEC PACK"

The main difficulty about DVDs is in setting Windows to avoid the AUTO-PLAY when a DVD is inserted into the tray.

Please open the "My Computer" folder and with DVD. Then open the "AutoPlay" tab.

Open all the selections into the combobox on the "Video files", "Mixed content", "Music CD", "DVD"

For each selection hit on "Select an action to perform" and then **every time hit "Apply"**.
At last hit OK.

Please pay attention that if you don't follow this procedure the "Auto-Run" will happen again.

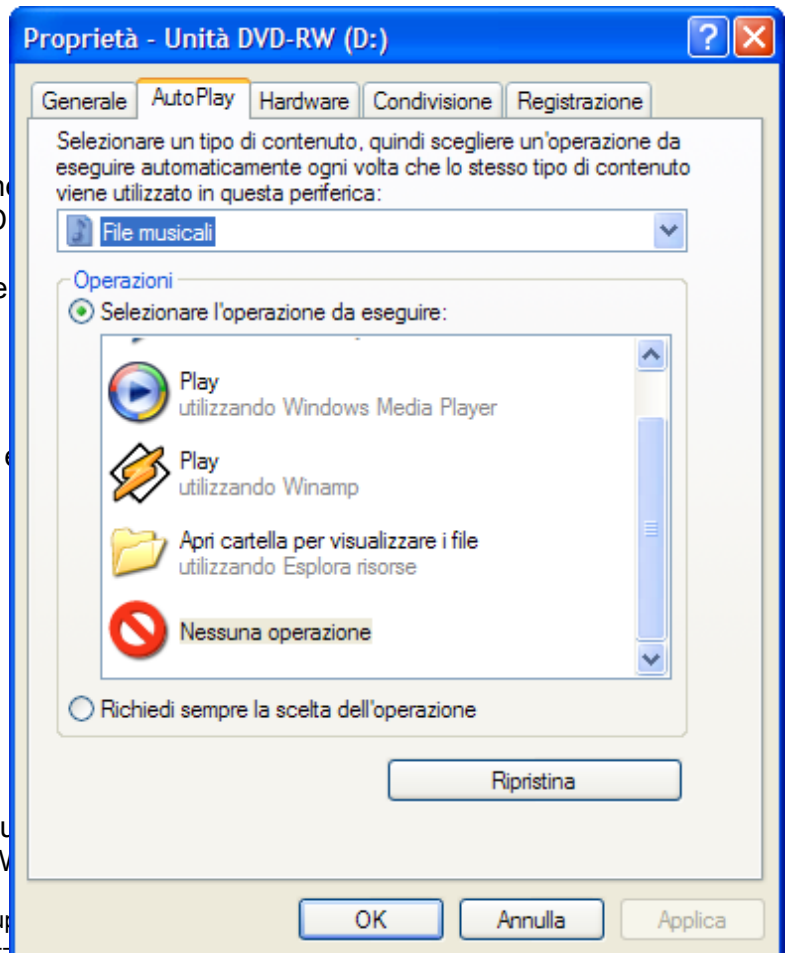
The Auto-Run feature could lead to additional bugs and so it is then advisable to completely disable it into the Windows Registry.

With WindowsXP (the name of the drive will no more be up)

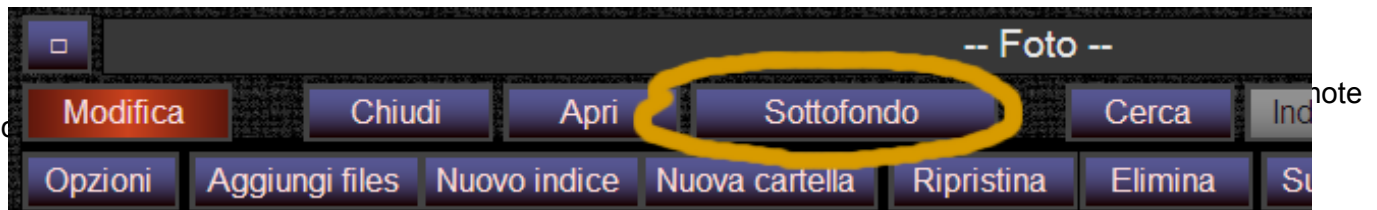
```
[HKEY_LOCAL_MACHINE\SYSTEM\CurrentControlSet\Services\CDRom]
"Autorun"="0"
```

With WindowsVista (FF = on every drive and on the USB too) (immediately effective)

```
[HKEY_LOCAL_MACHINE\Software\Microsoft\Windows\CurrentVersion\Policies\Explorer]
"NoDriveTypeAutoRun" = "000000FF"
```



The background music



If the background music is playing then the command "Background" pauses it, otherwise the first song of the folder actually used as background will start playing. Alternatively the execution is resumed if the song was paused before.



If the background music doesn't start, this could be because it was not yet defined or because the files or the folders containing them have been deleted. In this case it is enough to select any audio file and use the command "Background". From here on the chosen file and the other audio files into the same folder, or inside the same index, will be used as background music.

Looking at pictures

To start the slideshow of the pictures you have to “Open” a

During the slideshow the command “Pause” pauses the sh

The second time that the “Pause” command is used you'll s
and another hit on the “Pause” button restores the slideshow
and the following one.

Using “Up” and “Dw” you can manually change picture (ev



To modify the settings related to the picture show
(timings, transitions between them, border and visualized
informations) please use the “Options” panel.

If you desire to rotate a picture, please open the folder
containing it using the button “Folder” (you can find it
between the “Edit” buttons) . Then you will do a double
click onto the picture to be rotated – in this way that will be
open with the “Windows Picture and Fax Viewer” and
finally you can use the two lower buttons to rotate it.



To activate a musical background you can use the button “Background” (also named
Background Music when setting remote controls) . During the picture show the
musical songs inside the folder chosen as “Background” will be played in sequence.

It could be useful to put inside the picture folder, or into the picture index, the audio files desired as
musical background. In this way it will be easy to start the desired music background and immediately
after that to start the picture show.